



SPINCAM Project

Fernando Félix¹, Alejandro Iglesias², Mónica Machuca¹

¹Permanent Commission for the South Pacific

²Intergovernmental Oceanographic Commission of UNESCO

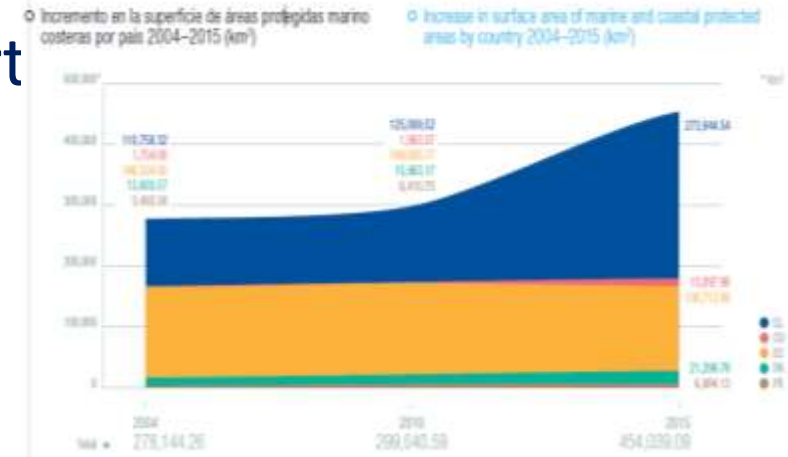




SPINCAM
CHILE-COLOMBIA-ECUADOR-PANAMÁ-PERÚ

Main objectives

- Provide tools to apply the ecosystem approach in Southeast Pacific countries for sustainable economic development (blue growth) through inter-institutional capacity-building
- Development of methodological tools to support decision-making in applying ICAM/MSP concepts

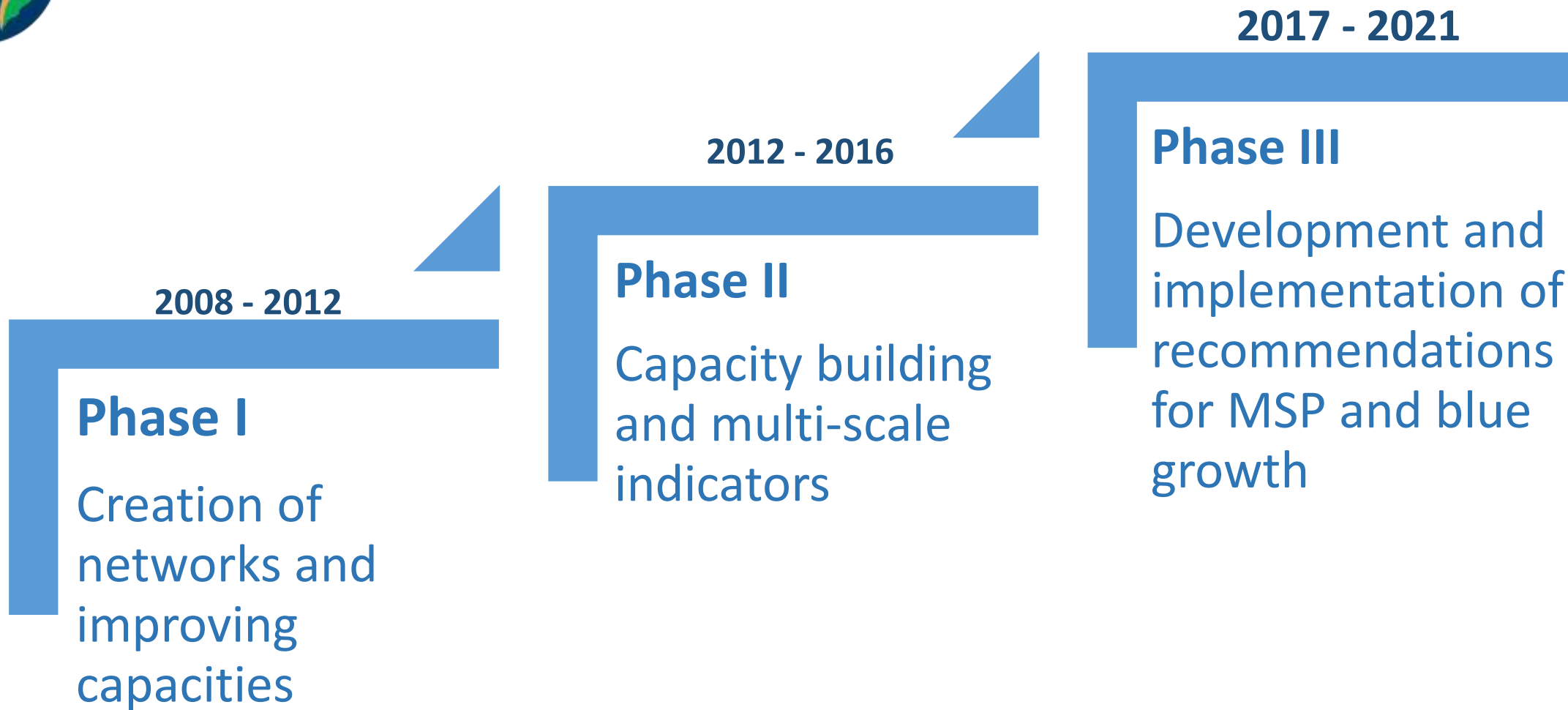




SPINCAM

CHILE-COLOMBIA-ECUADOR-PANAMÁ-PERÚ

Evolución





SPINCAM

CHILE-COLOMBIA-ECUADOR-PANAMÁ-PERÚ



Capacity building



Indicators

- Socioeconomic
- Ecological
- Biodiversity
- Risks
- Governance

Atlas nacionales

Atlas and regional indicators

- Chile
- Colombia
- Ecuador
- Panamá
- Perú



Networks and cooperation

www.atlasspincam.net

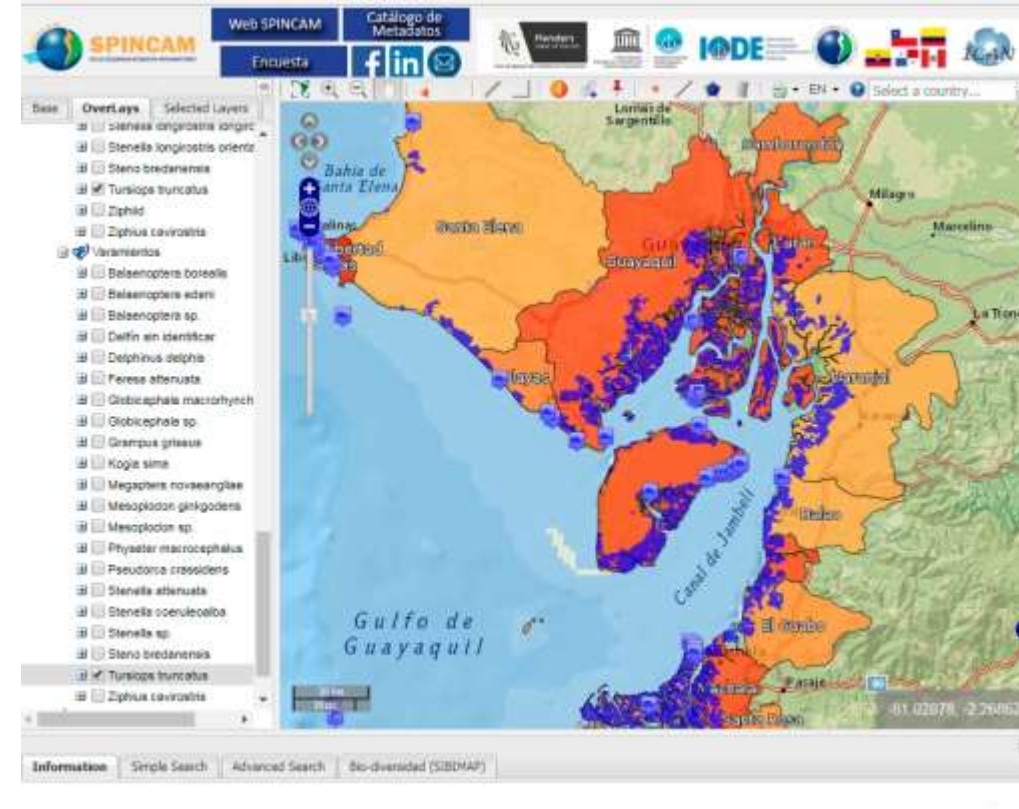




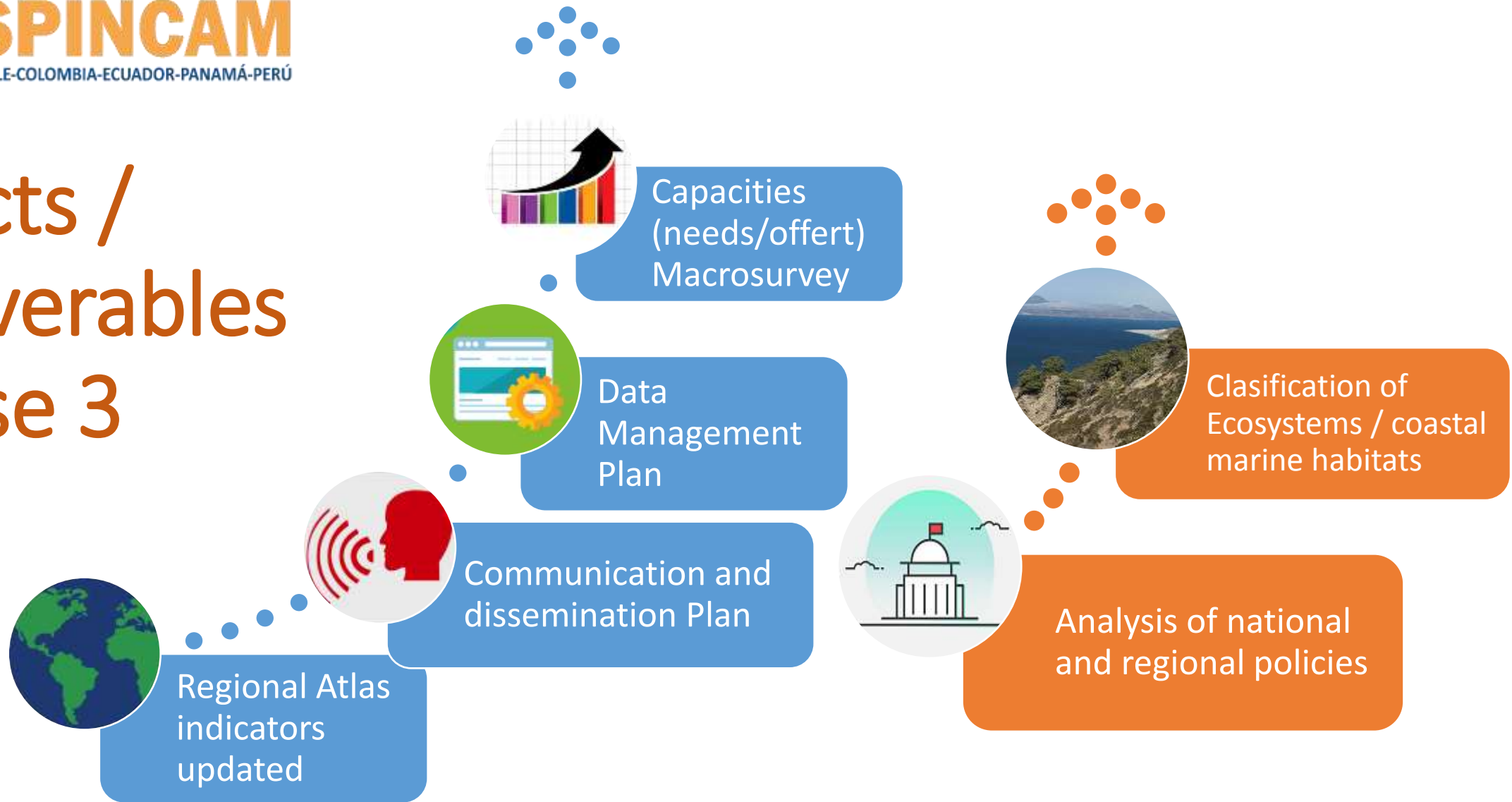
SPINCAM
CHILE-COLOMBIA-ECUADOR-PANAMÁ-PERÚ

Regional Atlas

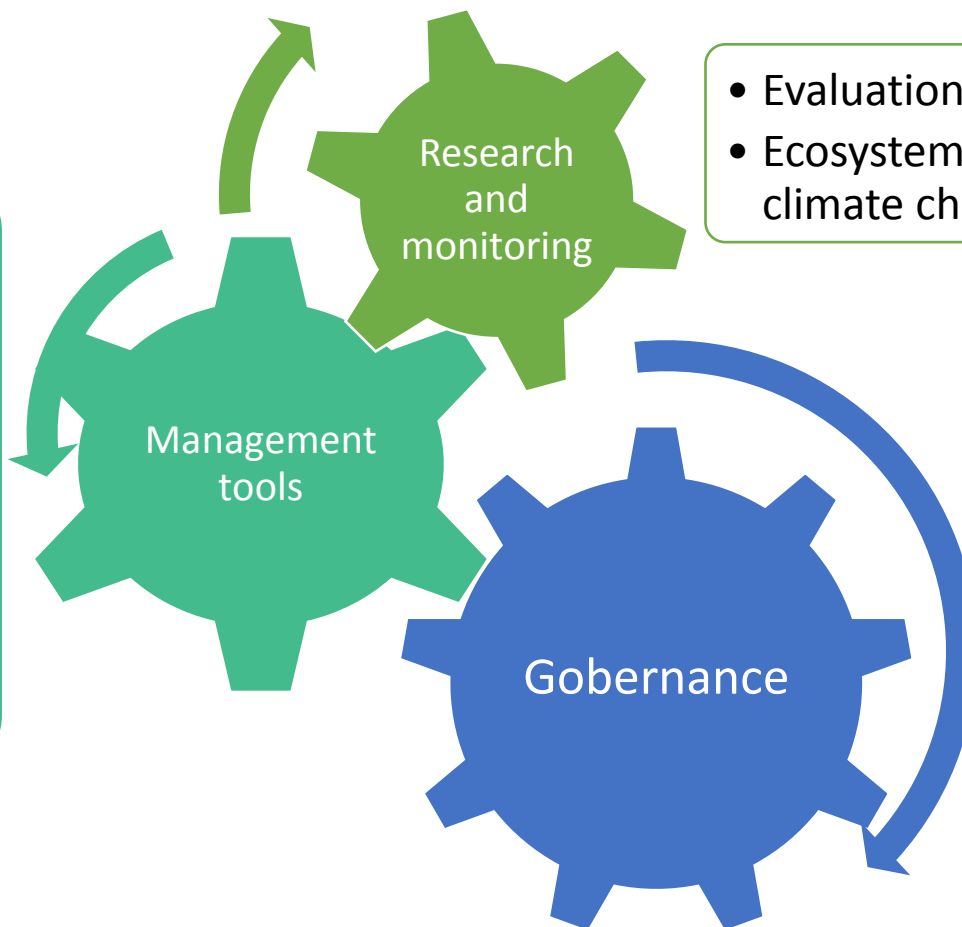
1. Operational since 2013 (<http://www.atlasspincam.net>)
2. 282 SHP and 7WMS distributed in 4 thematic modules: regional indicators, biodiversity, environmental information and pilot projects.
3. Metadata entry (catalog) and a datasets for download associated with each layer or indicator.
4. Generation and printing of a thematic map.
5. Indicators with historical data allow assessing their evolution.
6. Pre-designed analysis sheets available for download.



Products / Deliverables Phase 3



Priorities in capacity needs



- Valuation of ecosystem services
- MSP
- Coastal marine management indicators
- Data and information management
- Communication tools is support decision making
- Conflicts management

- Evaluation of coastal vulnerability
- Ecosystem-based adaptation to climate change

- Models of governance for coastal and marine zones
- Development of normative end policy



SPINCAM
CHILE-COLOMBIA-ECUADOR-PANAMÁ-PERÚ

Major Achievements

- Advances in institutionalization of ICAM processes
- Technical capacities strengthened (GIS, indicators, data and information management) (more than 400 hundred)
- Development of nine regional ICAM indicators and dozens of national indicators
- Geoportal with regional indicators and three hundred of layers on biodiversity and environment (global, regional and national)
- New or strengthened national geoportals in the five countries
- 5 pilot projects completed (ICAM) and 5 in progress (MSP)
- Strengthening experts networks



Challenges for Southeast Pacific countries

- Integrate coast to ocean management (MSP) in concordance global targets (e.g. SDG 14, CDB Aichi)
- Marine/maritime activities as the core of national economies under a blue grow concept (fishing, aquaculture, energy, tourism, etc.)
- Address old threats (pollution, habitat degradation) and new ones (litter/microplastics, vulnerability to climate change, e.g. sea level rise, ocean acidification, etc.), to create resilience
- Maintain regional indicators updated
- Maintain institutional capacities
- Include ABNJ/BBNJ issues in the regional agenda





SPINCAM
CHILE-COLOMBIA-ECUADOR-PANAMÁ-PERÚ

Our community





Thank you very much
Dank u wel

Contact:

ffelix@cpps-int.org

www.atlasspincam.net